

Flexi 8.5

What's New!

By integrating finely tuned technology with years of feedback from our partners and users, **Flexi 8.5** maintains its status as the number one choice for dependable, feature-rich sign-making software with uncompromising quality. Below are a few highlights of what is in store for you...

New Features

- Flexi 8.5 is fully compatible with **Windows Vista™** operating system
- **New drivers** for all the latest printers, engravers and vinyl cutters
- Set the number of times a job is automatically re-sent without re-RIPing using the **Repeat Job** function
- Application Direct Printing through **Dynamic PPDs**
- Nest or tile jobs to multiple rolls using the **Dual Roll function**
- Easily correct color with **Variations**, a point-and-click color correction tool
- **Sign Making Fonts and Graphics CD** included with upgrades of FlexiSIGN or higher
- Break up multi-copy, multi-page, or multi-tiled jobs into individual jobs using the **Break Apart** function

Improved Features

- Automatically or manually download updates with the **SAi Downloader**
- **Nesting** saves more media and adds flexible editing within Job Properties' layout view. –ICCs can now be applied to individual jobs in a nest
- **Enhanced Color Management System** which includes improved dithering, and support for up to 16 color channels
- **Import/Export filters**
- **Weedlines** no longer cut through the inside of letters
- **Easier preset management** - Save, save as, rename and delete are now available as buttons besides the preset selection

To Get The Latest Version

- Verify your User Number and existing version number:
Look in **HELP >ABOUT** menu
- If you have an existing Flexi product, contact your Reseller for upgrade pricing



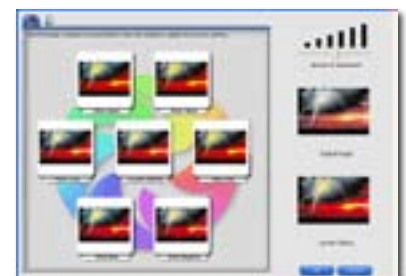
Flexi8.5 is compatible with Windows Vista



Dual Roll Function



Enhanced Color Management System



Color Variations Tool

Flexi8.5 *Top 30 Features*

	FlexiSIGN-PRO	FlexiEXPERT	FlexiPRINT & CUT	FlexiSIGN	FlexiLETTER	FlexiDESIGNER	FlexiENGRAVE-PRO	FlexiENGRAVE
DesignCentral Interface Window	✓	✓	✓	✓	✓	✓	✓	✓
DesignEditor Interactive Window	✓	✓	✓	✓	✓	✓		
Fill/Stroke Interactive Window	✓	✓	✓	✓	✓	✓	✓	✓
Workspace Profiles	✓	✓	✓	✓	✓	✓	✓	✓
Import & Export Standard File Formats	Improved	Improved	Improved	Improved	Improved	Improved	Improved	Improved
Export as Adobe PDF	✓	✓	✓	✓	✓	✓	✓	✓
True Shape Nesting	✓	Optional	Optional	Optional	Optional	Optional	✓	Optional
AutoTrace Vectorization	✓	✓	✓	✓		✓	✓	✓
ColorTrace Vectorization	✓	✓				✓	✓	
Job Estimation with Estimation Editor	✓	✓				✓	✓	
AutoSerialization (Variable Data)	✓	✓				✓	✓	
Make Transparent Bitmap	✓		✓			✓	✓	
Templates with Template Editor	✓	✓				✓	✓	
Adobe Plug In Filter Support	Improved		Improved			Improved		
Automatic Dimension	Improved	Improved	Improved	Improved		Improved	Improved	Improved
Repeat Job	New		New					
Variations Dialog	New		New					
Application Direct Printing	New		New					
ICC Profile Creation and Editing	Improved		Optional					
Job Estimation in Production Manager	✓							
Dual Roll Support	New		New					
Graphic/Text Styles	✓	✓	✓	✓		✓	✓	✓
Color Trapping	✓	✓	✓	✓		✓	✓	✓
Distortions	✓	✓	✓	✓	✓	✓	✓	✓
Object Color Control	✓							
Output Size Compensation	✓	New	New	New	New		✓	✓
Manual Editing of Nested Jobs	Improved		Improved					
Desktop Printing Output	Improved	Improved	Improved	Improved	Improved	Improved	Improved	Improved
Cutting Output	Improved	Improved	Improved	Improved	Improved			
Adobe PostScript 3	✓		✓					



Flexi is a registered trademark of SAI;
 Adobe and PostScript are registered trademarks of Adobe Systems, Inc.;
 Pantone and other Pantone, Inc. trademarks are the property of Pantone, Inc.;
 ColorLogic is a registered trademark of ColorLogic GmbH.
 All other trademarks are the property of their respective owners.
 ©2007 SAI. All rights reserved.
 Specifications subject to change without notice.

System Requirements - Windows Platform	
Operating System	Windows Server 2003, XP, Vista
RAM	1 Gb RAM or higher
Working Disk Space	4+ Gb
Video	1024x768 resolution, 24-bit color
Other	DVD drive, Available USB port for key, Broadband Internet connection recommended, Internet connection required, Available port connection for each output device

